



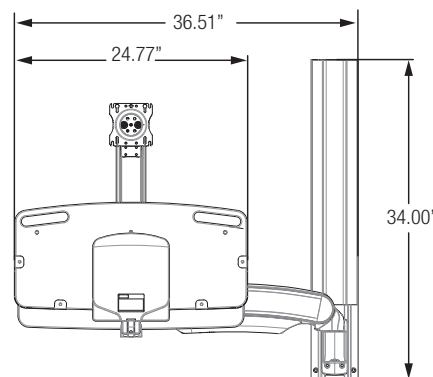
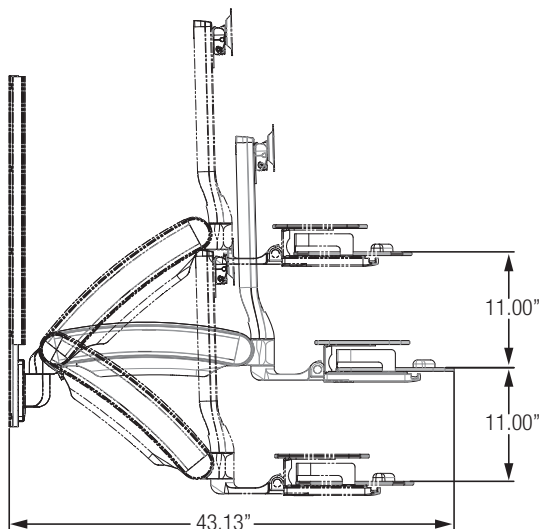
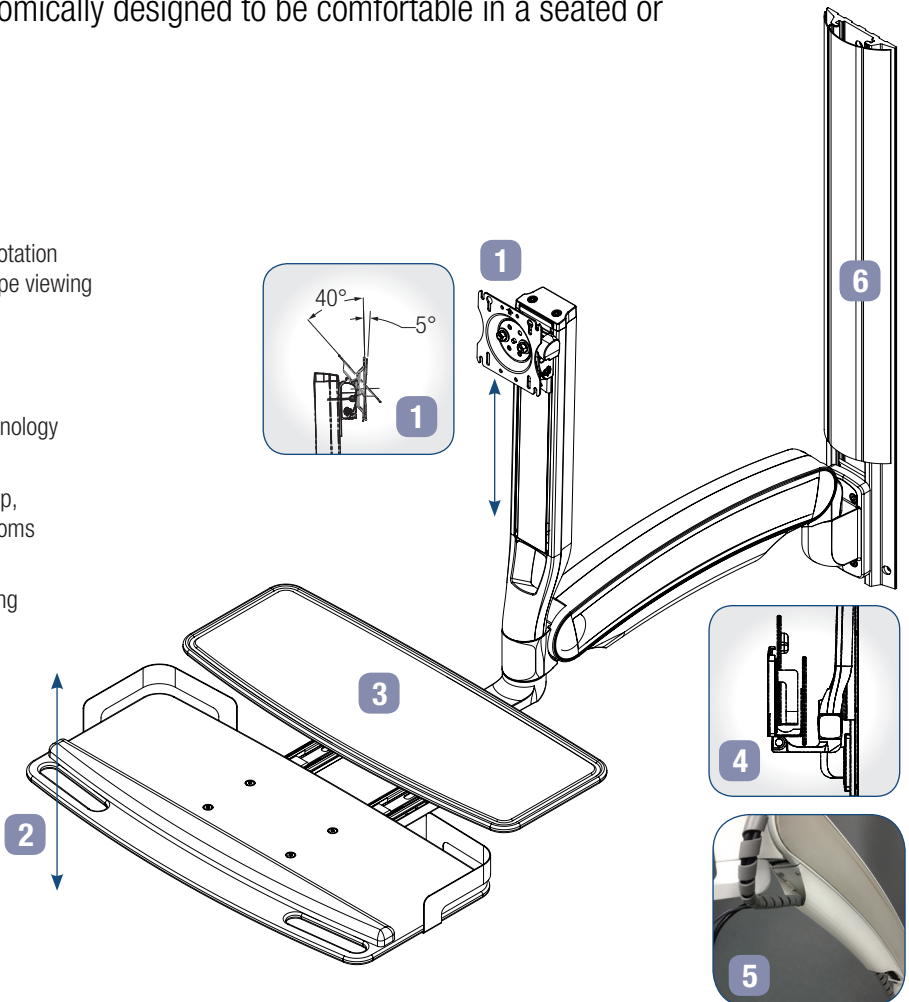
Standard Duty Wall Mounted Workstation

Healthcare is changing. Are you changing with it?

The MIDMARK® Standard Duty Wall Mounted Workstation is industry leading with over 22" of height adjustments. It is ergonomically designed to be comfortable in a seated or standing position.

FEATURES & BENEFITS:

1. **Monitor Adjustments**
9.5" of height adjustment, 45° of tilt and 180° of rotation with the quick connect VESA for portrait to landscape viewing
2. **Keyboard Height Adjustment**
22" of keyboard height adjustment
3. **Workstation**
Upper level work surface for papers and small technology
4. **Compact Design**
Stores just 9.47" off the wall with the tray flipped up, perfect for high traffic areas, hallways or patient rooms
5. **Cable Management**
Integrated wire management system in the mounting arm for neat and quick wire installation
6. **Wall Track**
Available in 34" length for direct to drywall applications optimizing locations with limited space
7. Compliant with TAA regulations
8. Compliant with RoHS regulations



| Model | Description | OPM# | Tray Width | Tray Depth | Tray Height | Weight Capacity | Mounting Standard |
|-------|--|----------|------------|------------|-------------|-----------------|-------------------|
| 6282 | Standard Duty Wall Mounted Workstation | 0217-013 | 25" | 10" | 2.1" | 5-20 lbs. | VESA 75mm/100mm |